



FLOWERS FOR POLLINATORS

Pollinator Identification

General Bee characteristics

- Small to large in length
- Thick-bodied
- Hairy
- Pollen collecting hairs on legs
 - HB, BB, distinct pollen baskets
 - Some spp. collect on abdomen
- Moderate length antennae, usually elbowed



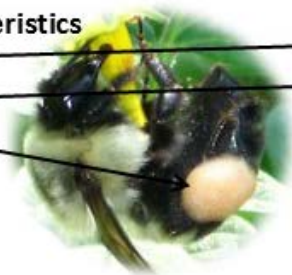
Honey bee characteristics

- Moderate sized
- Golden brown abdomen with black stripes
 - But color is variable!
- Pollen baskets



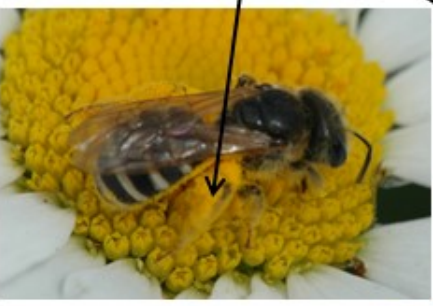
Bumble bee characteristics

- Moderate to large
- Yellow and black
- Pollen baskets



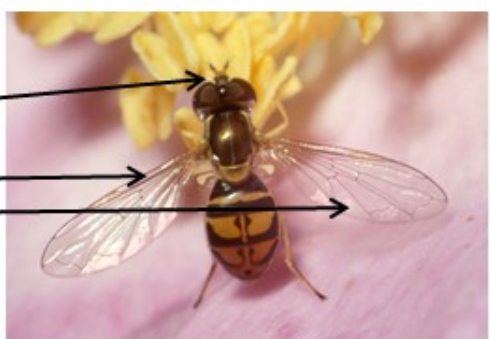
Native solitary bee characteristics

- Size and color variable
- Pollen collected on hind legs or under abdomen (but not a pollen basket)
- Any bee not a honey bee or bumble bee



True fly characteristics

- Short antennae
- Two wings
- Some are bee and wasp mimics (syrphid flies)



Tachinid fly



Blow fly

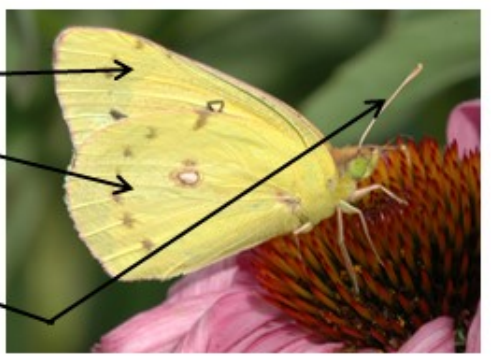


Syrphid flies



Butterfly and moth characteristics

- Four wings covered with scales
- Antennae generally slender, straight, and medium length



Beetle characteristics

- Wing covers present
- Antennae variable



Wasp characteristics

- More slender than bees
- Antennae medium length, usually elbowed
- Generally visible waist
- Mostly hairless



Other insects you might see

Katydid



True bugs



ADDITIONAL RESOURCES

Evans, E., “Plants for Bees”, University of Minnesota Department of Entomology. 2014.
<http://beelab.umn.edu/Education/index.htm>.

Flowers for Pollinators blog <https://flowersforpollinators.wordpress.com>

“Insect Pollinator Best Management Practices for Minnesota Yards and Gardens”,
Minnesota Department of Agriculture, 2014.
<https://www.mda.state.mn.us/protecting/bmps/~media/Files/protecting/bmps/pollinators/pollinatoryardbmps.pdf>

Holm, Heather, *Pollinators of Native Plants*, Pollination Press LLC, Minnetonka, MN. 2014

The Xerces Society for Insect Conservation, www.xerces.org/

Wilson, J.S. and Carrill, O.M., *The Bees in Your Backyard: A Guide to North America Bees*,
Princeton University Press, Princeton, NJ. 2016.

QUESTIONS OR COMMENTS?

Jeff Hahn, Extension Entomologist, Department of Entomology, University of Minnesota.
hahnx002@umn.edu

Julie Weisenhorn, Extension Educator, Department of Horticultural Science, University of
Minnesota. weise019@umn.edu

